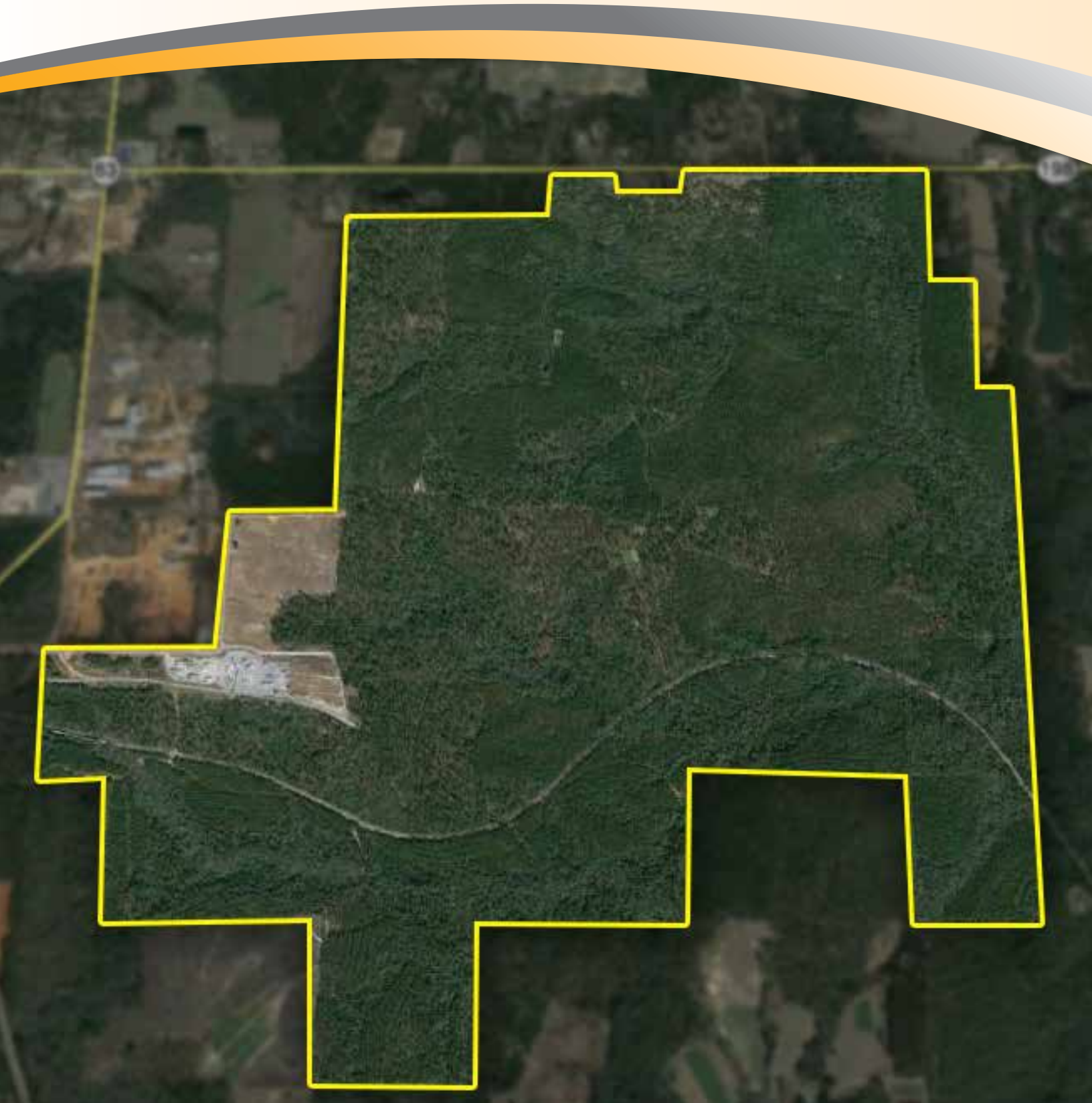




MISSISSIPPI EXPORT RAILROAD

SOUTH MS INDUSTRIAL RAIL SITE



LOCATION

Lucedale, George County, MS 39452

PROPERTY & AREA DESCRIPTION

George County Industrial Park is a 1200 acre park located in Lucedale, Mississippi, within 39 miles of the Port of Mobile and 40 miles of the Port of Pascagoula. Lucedale is located in George County, MS 40 miles north of the Mississippi Gulf Coast. US Hwy 98 (4-lane) is adjacent to this property. The developable acreage is outside the FEMA 100-year floodplain. Parcels are available from 5 to 1000 plus acres. The park is served by the Mississippi Export Railroad with connections to the CN, CSXT, KCS and NS railroads. This site is available for sale or lease.

SITE DETAILS

Available Acres: 5 - 1000+

Topography: Gentle rolling

Zoning: Not zoned

Adjacent Available Acres: None

Within City Limits: No

TRANSPORTATION

Nearest Interstate:	I-10	Distance (miles): 35 Miles
	I-65	Distance (miles): 31 Miles
Nearest Highway:	US Hwy 98	Distance (miles): 2.5 Miles
Nearest Airport:	Mobile Regional	Distance (miles): 30 Miles
Rail Served:	Yes	

SOUTH MS INDUSTRIAL RAIL SITE

UTILITIES

Electric Distribution: Yes

Natural Gas Distribution: Yes

Water: Yes

Sewer: Yes

Local Telecommunications Service: Yes

CONTACT

Manager of Marketing & Business Development
Mississippi Export Railroad Company
4519 McInnis Ave.
Moss Point, MS 39563
Phone: 228-475-3322
Fax: 228-475-3337

